



**GEARHEADS** Frame size 80mm sq. (3.15 in. sq.)

METAL TYPE & BALL BEARING TYPE

▶ **RATED TORQUE OF GEARHEAD**

MODEL	Speed(rpm)	500	300	200	120	100	60	50	30	20	15	10	9
	Ratio	50Hz	3	5	7.5	12.5	15	25	30	50	75	100	150
	60Hz	3.6	6	9	15	18	30	36	60	90	120	180	200
<b>L8HK□M</b> <b>L8HK□B</b>	kg-cm	4.7	7.9	11.8	19.7	23.7	35.6	42.7	64.4	80	80	80	80
	N-m	0.46	0.77	1.16	1.93	2.32	3.49	4.19	6.31	7.84	7.84	7.84	7.84
	oz-in	66	110	165	274	329	494	593	894	1111	1111	1111	1111

- \* The normal torque is that the motor and gearhead are directly coupled.
- \* Insert the denominator of reduction ratio in □ of gearhead model name.
- \* Actual rotation speed is 2~15% less than synchronous speed.
- \* ■Color indicates that the rotation of gearhead shaft is in opposite direction as output shaft of motor.

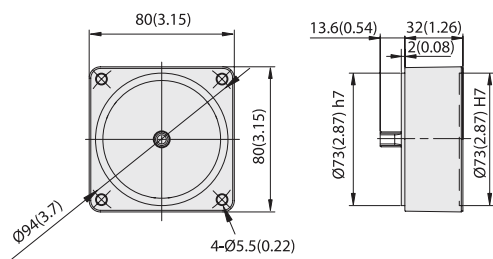
BRAKE MOTORS

**DIMENSIONS**

Unit : mm(inch)

**DECIMAL GEARHEAD**

**L8G10D**

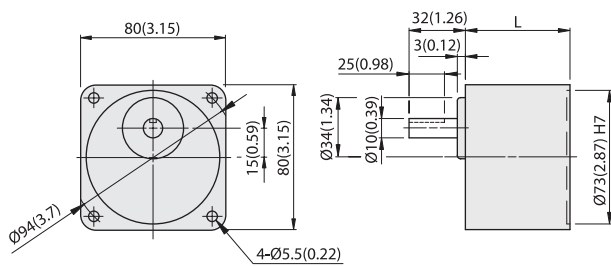


WEIGHT 0.4kg(0.88 lb)

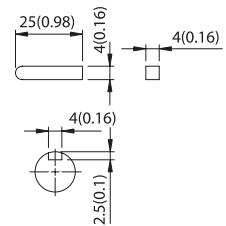


**GEARHEAD**

**L8HK□M(B)**



GEAR RATIO	L		WEIGHT		BOLT
	mm	in	kg	lb	
1/3~1/18	32	1.26	0.5	1.1	M5x50
1/20~1/200	46	1.81	0.7	1.5	M5x65



KEY SIZE

**L8HK□M(B) + L8R25P□LE**

